

Database Migration Guide

SQL Server/MS Access to Daffodil DB/One\$DB

This Database Migration Guide explains how to migrate from SQL Server/MS Access to Daffodil DB/One\$DB. The Guide provides a step-by-step explanation of the **Import option** available in Daffodil DB/One\$DB by which you can import your data without any data loss. It is simple, easy to understand and illustrated with screen shots.

Further, the various steps described below have been thoroughly tested in lab environs and comprises of the best methods for migration to Daffodil DB/One\$DB.

Steps to be taken before invoking Import Wizard of Daffodil DB/One\$DB

Step 1: Start the SQL server.

Step 2: Create DSN for SQL Server/MS Access database.

Step 3: Open Daffodil DB Browser in server or embedded mode. (For server mode, run *StartServer.bat* and then run *BrowserServer.bat*. For embedded mode, run *BrowserEmbedded.bat* only)

Working with the Import Wizard of Daffodil DB/One\$DB

Step 4: To start the Import Wizard of Daffodil DB/One\$DB, click the Tool Menu and select Import. The Import/Export Wizard dialog box appears.

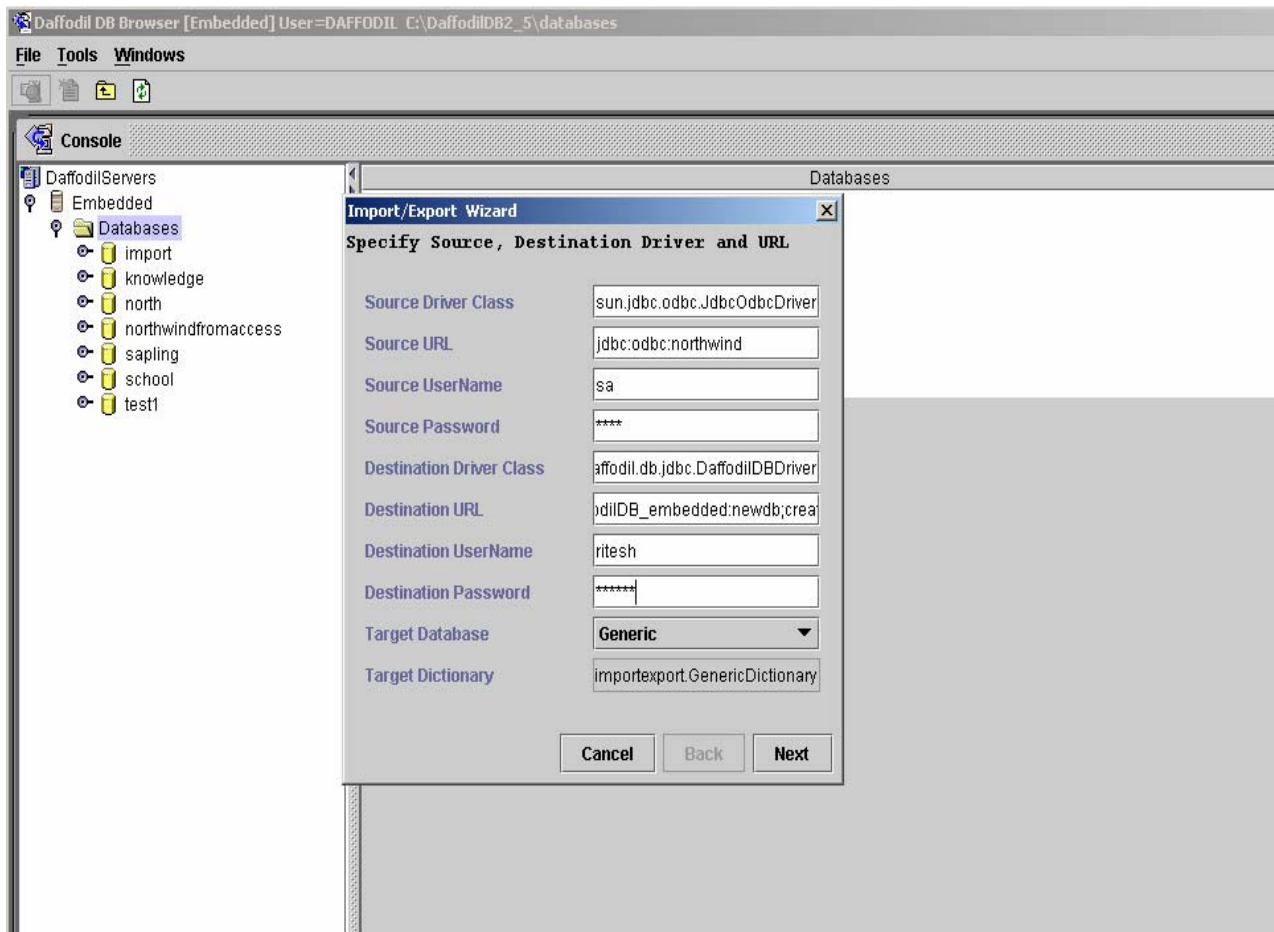
Step 5: Fill up the following information about the Source Database in the dialog box:

<i>Source Driver Class</i>	-	sun.jdbc.odbc.JdbcOdbcDriver
<i>Source URL</i>	-	jdbc:odbc:DSN_NAME (the DSN_NAME corresponding to source database should exist)
<i>Source UserName</i>	-	Specify the user name of a valid user of the source database.
<i>Source Password</i>	-	Specify the password for the above user.
<i>Source Database</i>	-	SQL Server/MS Access
<i>Source Dictionary</i>	-	Will be automatically populated once you select the source database

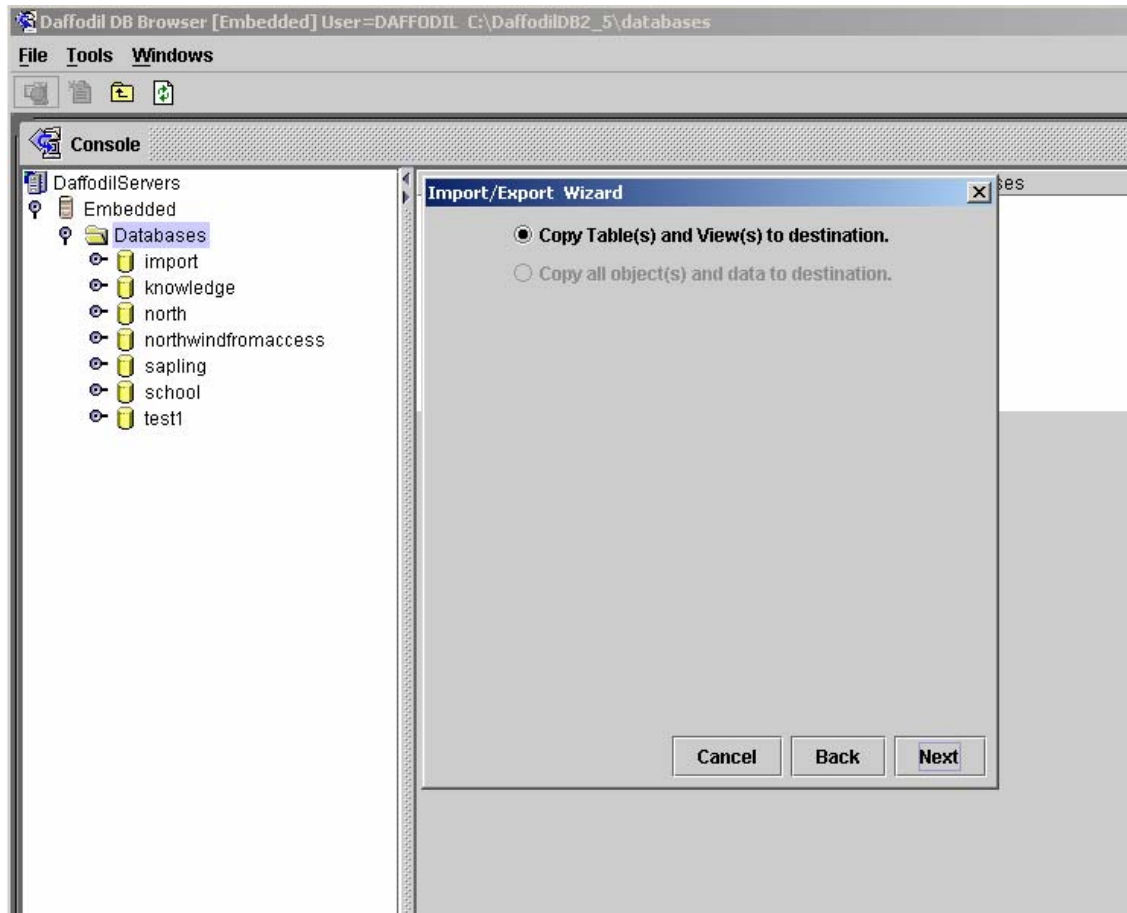
Step 6: Fill up the following information about the Destination database in the dialog box:

- | | | |
|---------------------------------|---|---|
| <i>Destination Driver Class</i> | - | in.co.daffodil.db.jdbc.DaffodilDBDriver
(embedded mode) |
| | - | in.co.daffodil.db.Rmi.RmiDaffodilDBDriver
(server mode) |
| <i>Destination URL</i> | - | jdbc:daffodilDB_embedded:DBNAME;create=true
(embedded mode) |
| | - | jdbc:daffodilDB://localhost:3456/DBNAME;create=true
(server mode) - User can create any database name in
place of DBNAME |
| <i>Destination UserName</i> | - | Specify the user name of a valid Daffodil DB user. |
| <i>Destination Password</i> | - | Specify the password for the above user. |
| <i>Target Database</i> | - | Generic |
| <i>Target Dictionary</i> | - | Will be automatically populated once you select the
target database |

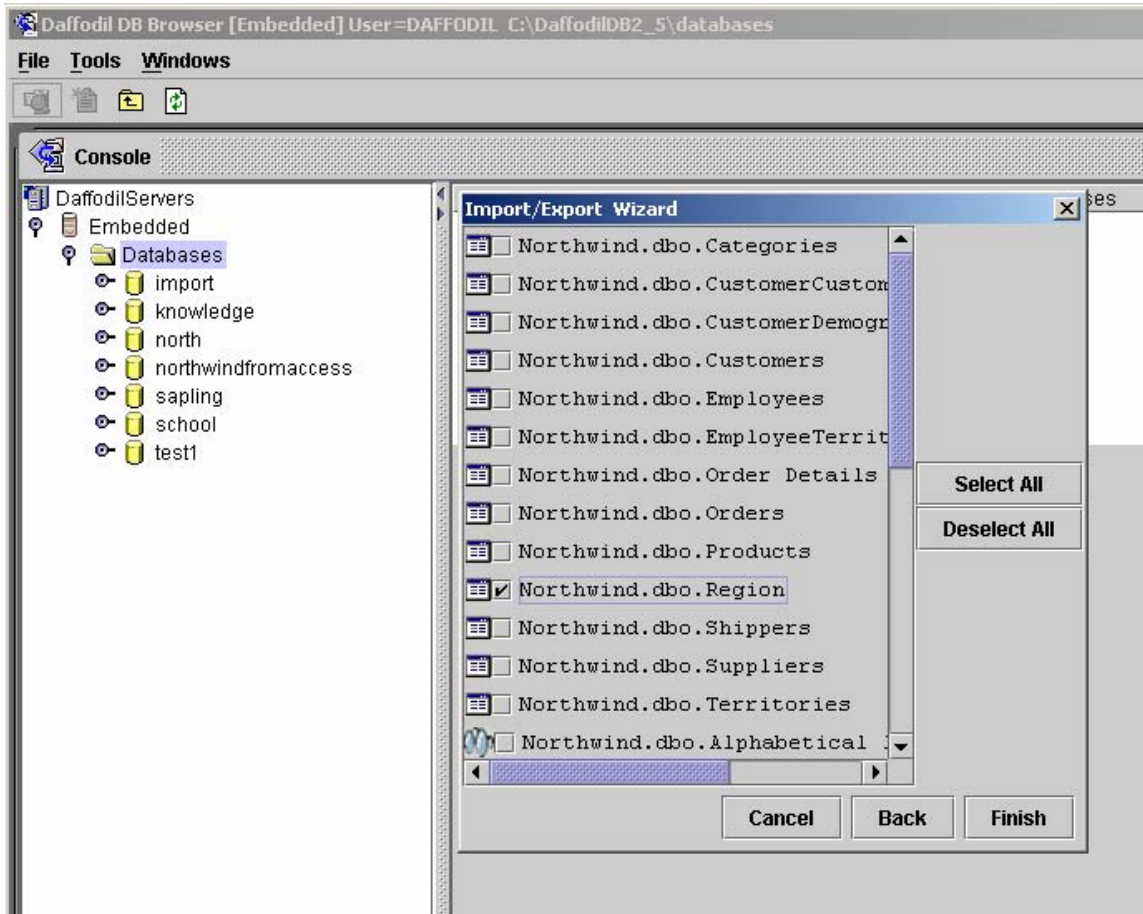
You can see the above processes in the following screen shot.



Step7: Click on **Next**. The following dialog box appears.

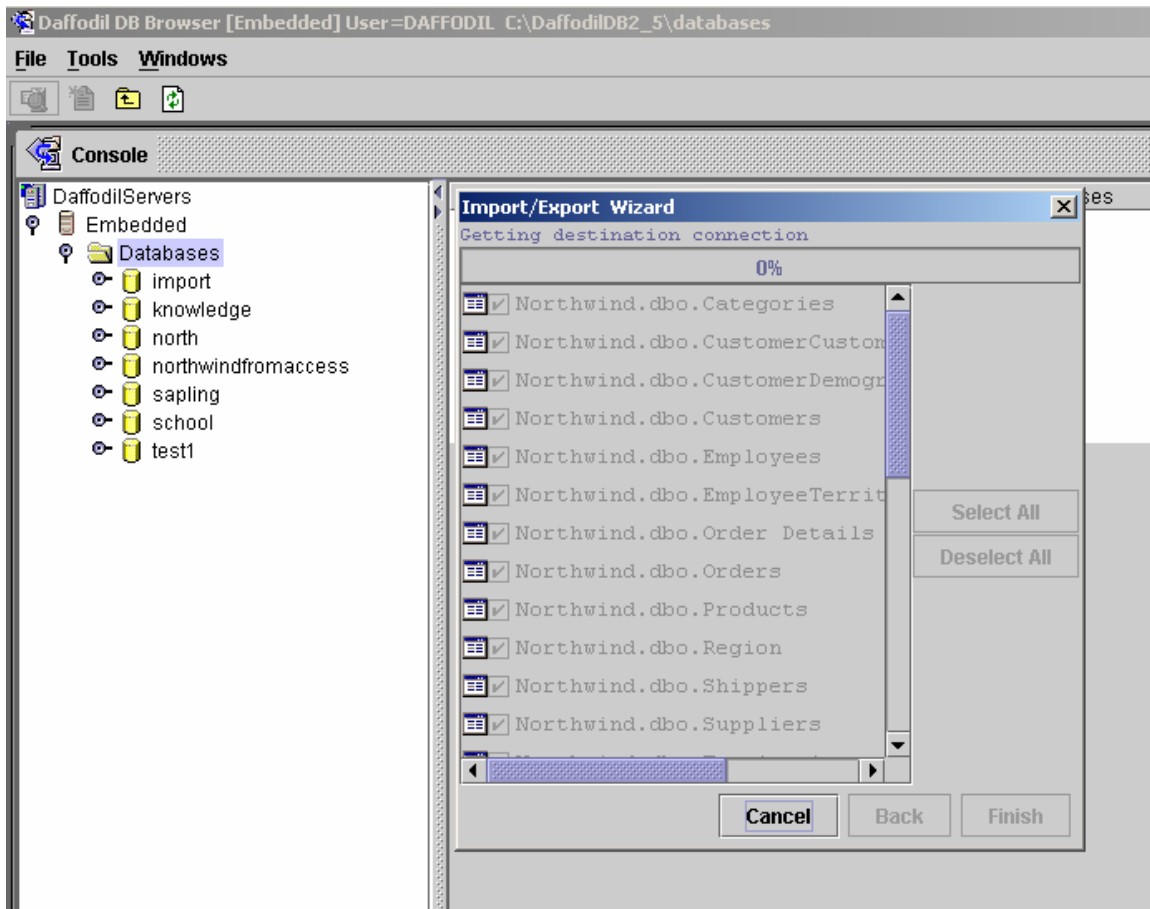


Step 8: Click on **Next** again. The following dialog box appears.



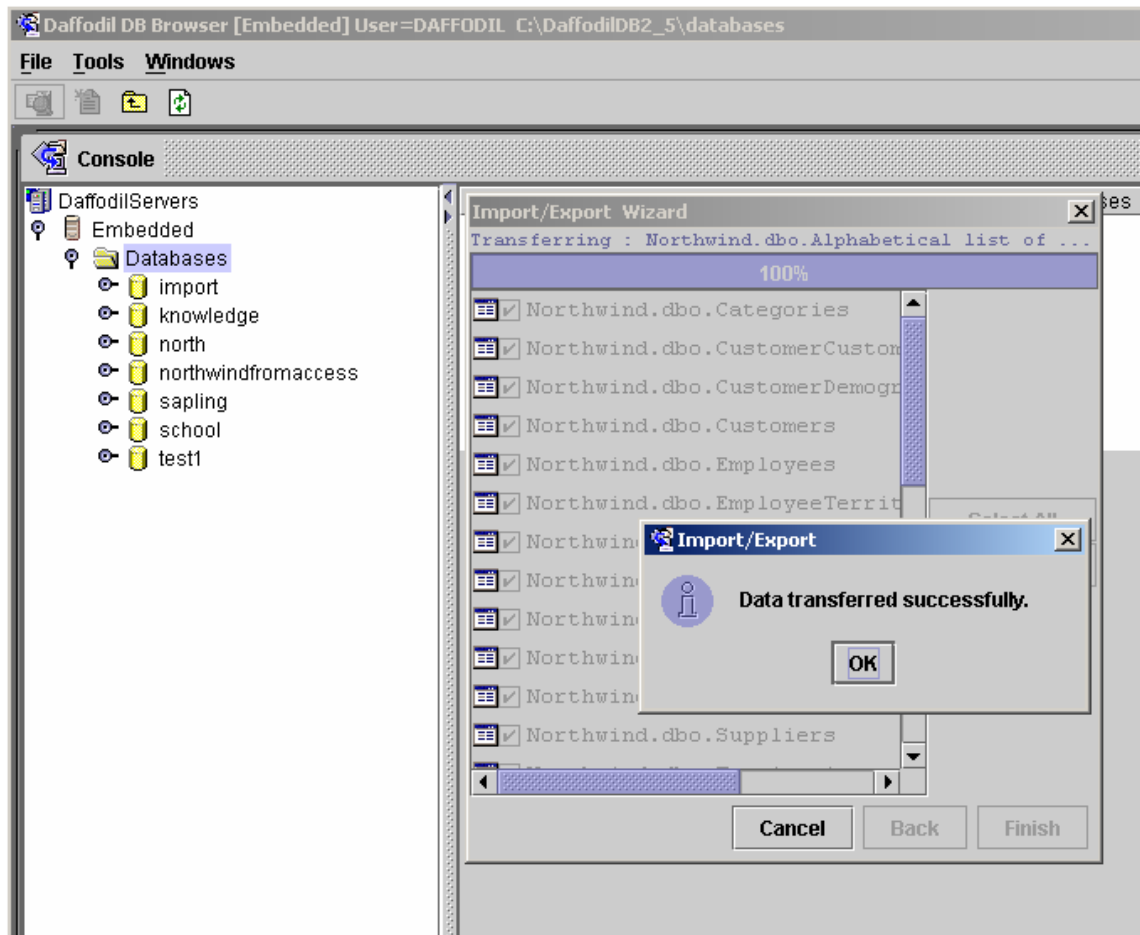
Step 9: Select those tables and views which you want to import and click on **Finish**. If you want to select all, click on **Select All** button and then click on **Finish**. If you want to deselect all, click on **Deselect All** button.

After clicking Finish, the process of importing the database will start and the status will be shown on the top of the Wizard, as illustrated below.

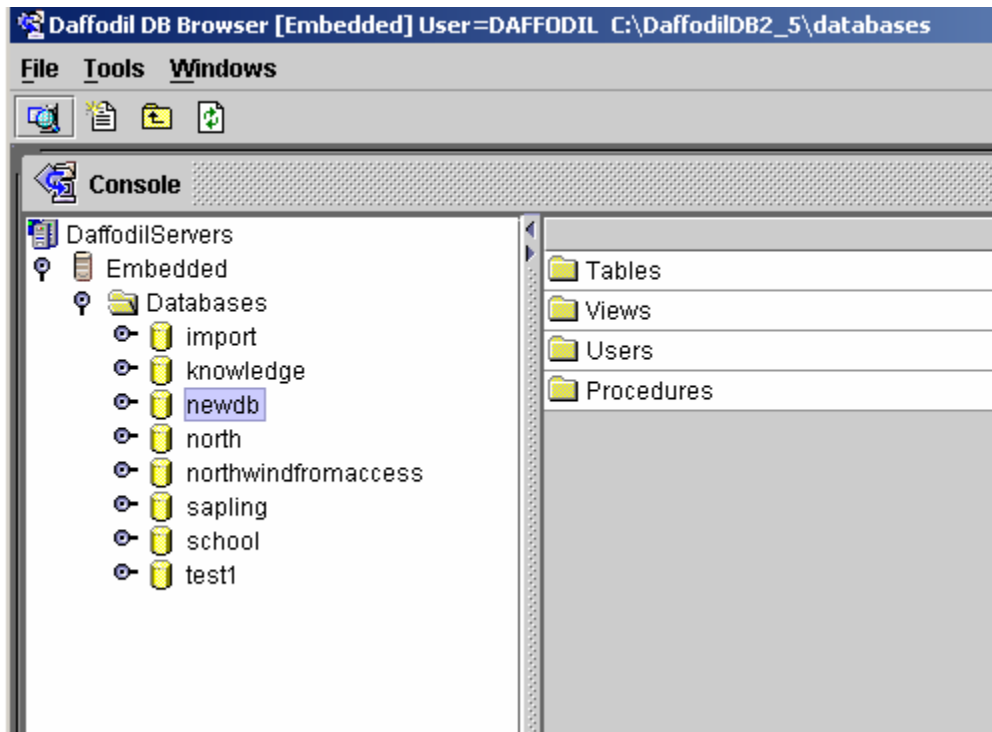


Note: The Finish button will be activated only when at least one checkbox is selected.

Step 10: After importing database, the **Data transferred successfully** screen will be shown, as illustrated below.



Step 11: Click on **OK** and then refresh the contents of the Daffodil DB database. The imported database is shown on the left pane.



Note: If you are importing data into an existing database in Daffodil DB, then it is recommended that you make a back up of that particular database before starting with the import process.

Your data has now been successfully imported from SQL Server/MS Access to Daffodil DB/One\$DB. For any further technical assistance, please contact us at support@daffodildb.com

You can also discuss issues with our online developer community at the [Daffodil Developer Forum](#)